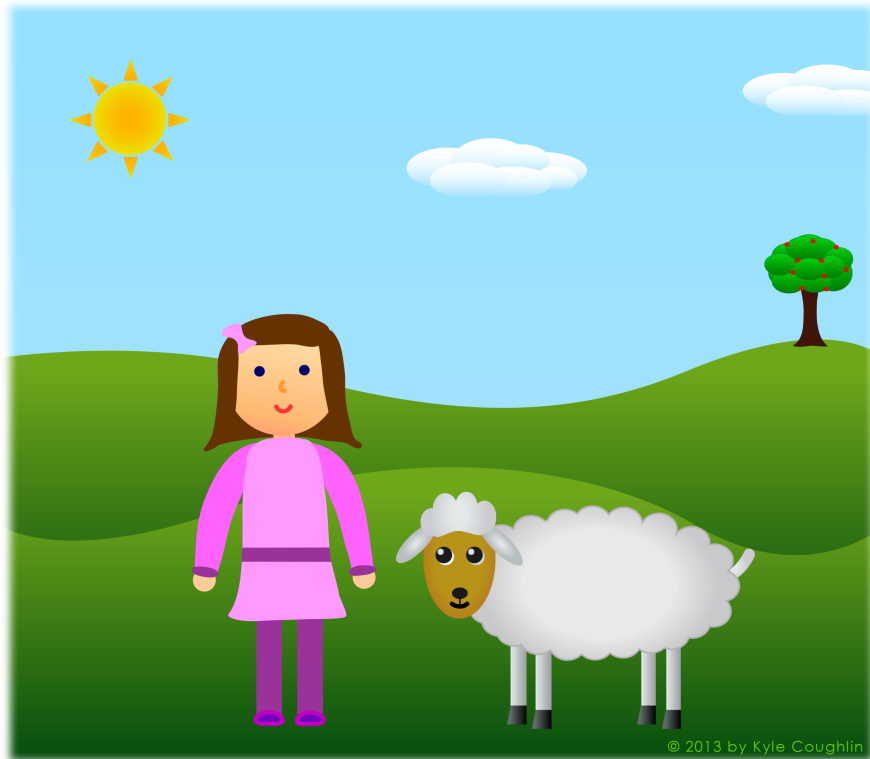


Mary Had a Little Lamb

Clarinet Arrangement
by Kyle Coughlin

by Lowell Mason

The image shows two staves of musical notation for a clarinet arrangement. The first staff begins with a treble clef and a 4/4 time signature. Above the staff, the notes are grouped under three chord symbols: Bb, F, and Bb. The melody consists of quarter notes and half notes. The second staff continues the melody, also with a treble clef, and ends with a double bar line. Above this staff, the notes are grouped under three chord symbols: Bb, F, and Bb.



TheClarinet.net 